



COMMERCIAL LAND FOR SALE

2 Lots
TBD E. Mall Drive
Rapid City, South Dakota

Sandra Runde, CCIM, SIOR
Commercial Broker

Prudential Kahler REALTORS®
2401 W Main Street, Rapid City SD 57702
605-343-7500 or 800-658-5550

E-mail sandra@kahlerinc.com
www.kahlerinc.com

View commercial listings at
<http://www.RapidCityCommercial.com>



Lot 4

address

TBD E. Mall Drive
Rapid City, SD 57701

legal

Lot 4, GLM Subdivision #2,
Section 28, T2N, R8E
Pennington County

tax information

tax id #64166
2011 taxes payable in 2012: TBD
2012 Preliminary Assessed Value:
\$609,500
Recently replatted

land information

4.24 acres

zoning information

light industrial

property description

Flat building ground across from Cabela's, near TSC and other new construction. Easy entrance and exit via I-90 exit 61. All utilities to lot line.

listing price

\$609,500
(\$3.30 per square foot)

Lot 6

address

TBD E. Mall Drive
Rapid City, SD 57701

legal

Lot 6, GLM Subdivision #2,
Section 28, T2N, R8E
Pennington County

tax information

tax id #64168
2011 taxes payable in 2012: TBD
2012 Preliminary Assessed Value:
\$428,400
Recently replatted

land information

2.98 acres

zoning information

light industrial

property description

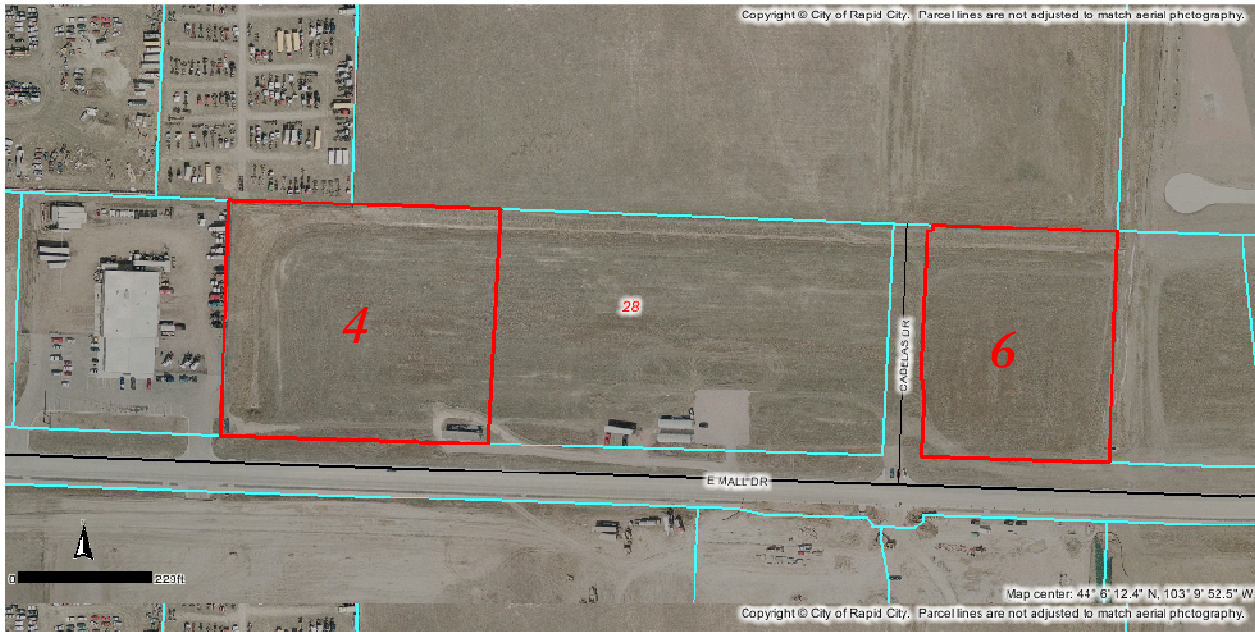
Flat building ground across from Cabela's, near TSC and other new construction. Easy entrance and exit via I-90 exit 61. All utilities to lot line.

listing price

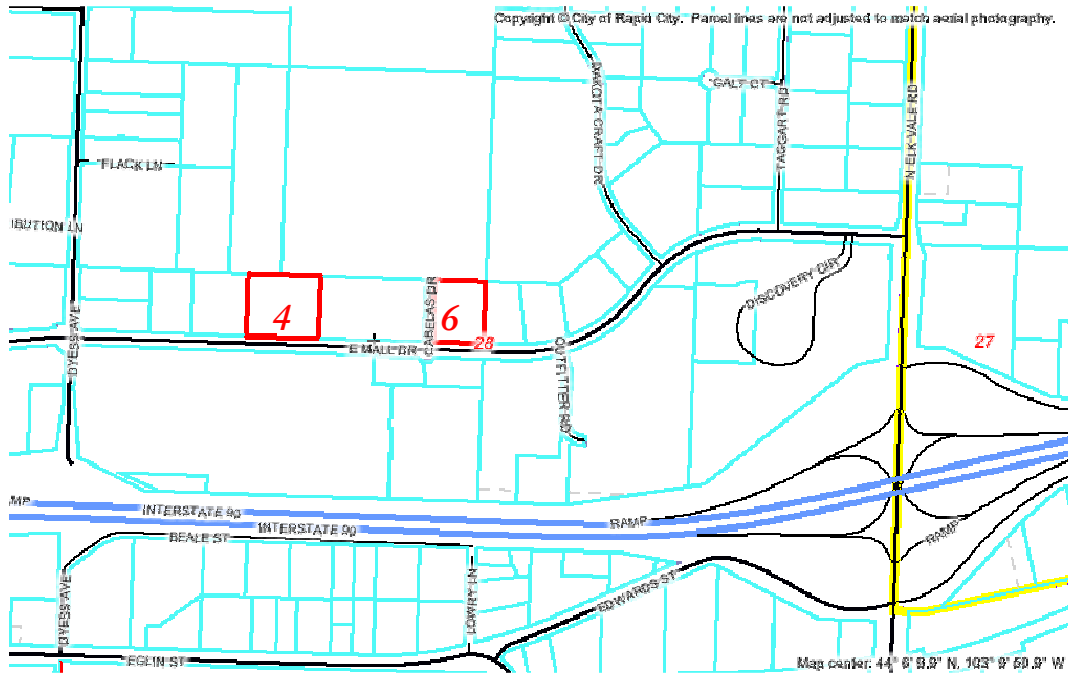
\$428,400
(\$3.30 per square foot)



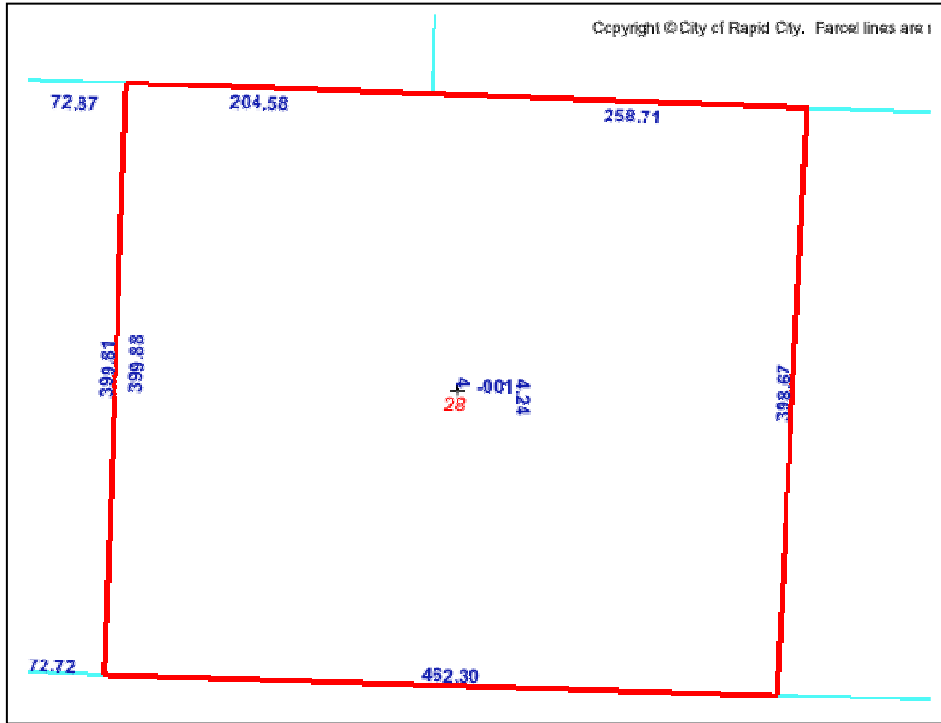
aerial



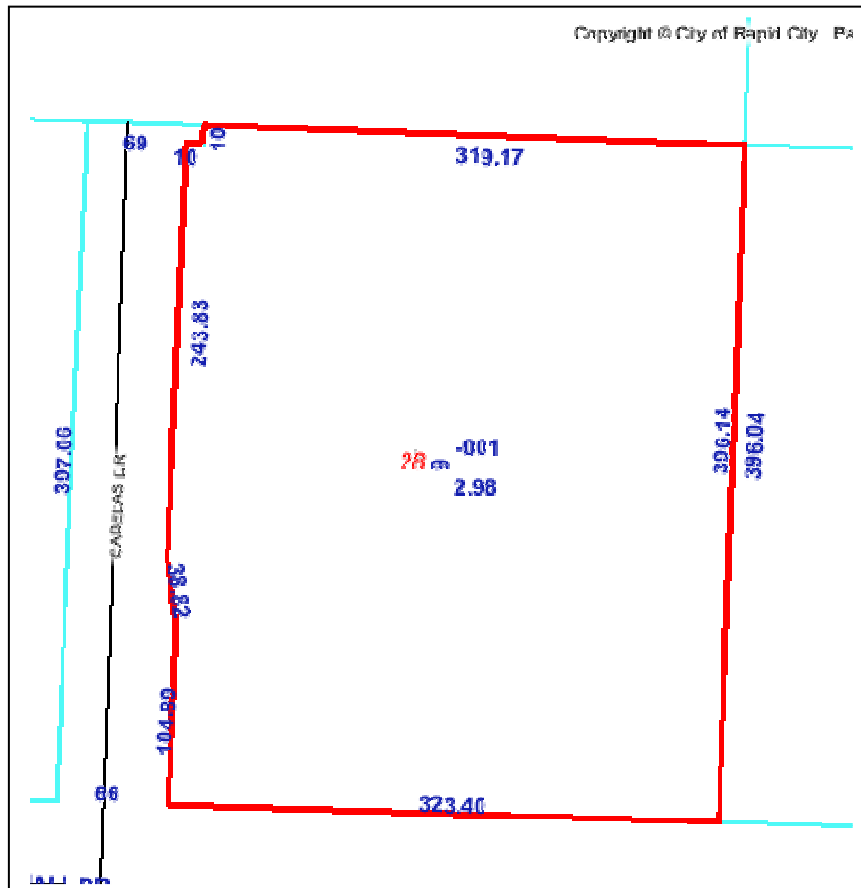
street map



lot 4 dimensions



lot 6 dimensions



Sandra Runde, CCIM, SIOR
Prudential Kahler REALTORS®

2401 W Main Street, Rapid City SD 57702

605-343-7500 or 800-658-5550

E-mail sandra@kahlerinc.com

Visit our website at www.kahlerinc.com

legal notice

This report is only for use in the marketing of this property. It is not an estimate of value and should not be relied upon or used as such. Prudential Kahler REALTORS is representing the seller and acting only in the capacity of a South Dakota Real Estate Broker.

No representations or warranties, expressed or implied, by operation of law or otherwise, are made as to the accuracy or completeness of these materials or any other confidential materials, or as to the condition, quality, or fitness of the property; and neither Seller nor Prudential Kahler REALTORS nor any of their respective directors, officers, employees, stockholders, owners, affiliates, or agents will have any liability to receiving party or any other person resulting from receiving party's or any other person's use of the confidential materials. The property will be sold "as is," "where is," and "with all faults" as of the date of closing. Receiving party will have an opportunity to perform its own examination and inspection of the property and information relating to same and must rely solely on its own independent examination and investigation and not on any information provided by Seller or Prudential Kahler REALTORS. Only those representations and warranties, if any, that are made to receiving party in a sale contract when, as, and if same is executed by receiving party and Seller, and subject to such limitations and restrictions as may be specified therein, will have legal effect. Without limiting the generality of the foregoing, any environmental reports, any structural reports, or any other type or kind of report prepared by third party, if any, included in the confidential materials have not been prepared by Seller and neither Seller nor Prudential Kahler REALTORS makes any representation or warranties with respect to the truth, accuracy, or completeness of same and neither receiving party, nor its representatives nor any other person shall be entitled to rely on such reports or any information contained therein. Without limiting the foregoing, information contained in this Information Packet may vary from the date of publishing. In some instances, more complete or up-to-date information may have become available following the printing of the Information Packet. All sizes and square footage set forth herein are approximations only, based on information heretofore available. Actual sizes and square footage may vary. The reader should seek independent financial, accounting, and legal advice on these reports prior to taking any action.