



# INVESTMENT PROPERTY AT CREEKSIDE OFFICE PARK

2620 JACKSON BLVD, UNIT B  
RAPID CITY, SD 57702

**FOR SALE \$1,495,000**



**MULTI-LEVEL INVESTMENT BUILDING | HIGHLY DESIRABLE LOCATION**

KW Commercial  
*Your Property—Our Priority<sup>SM</sup>*  
2401 West Main Street, Rapid City, SD 57702  
605.335.8100 | [www.RapidCityCommercial.com](http://www.RapidCityCommercial.com)  
Keller Williams Realty Black Hills

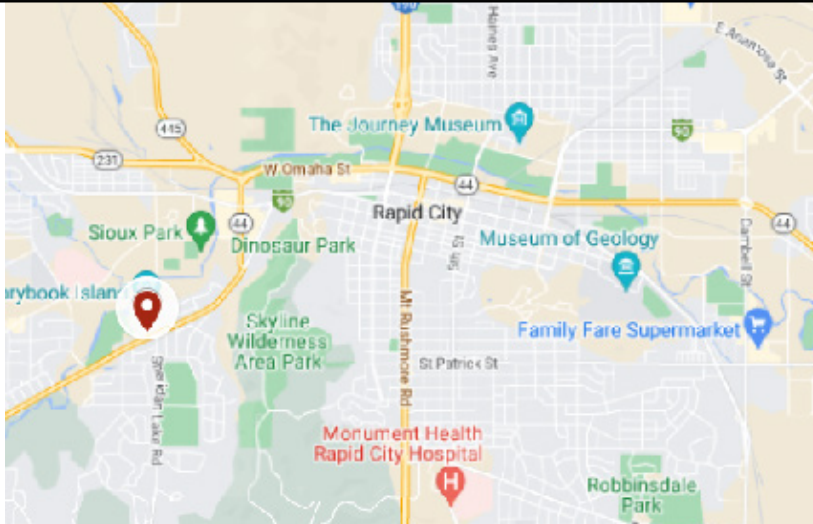
**EXCLUSIVELY LISTED BY:**

**Chris Long**, SIOR, CCIM  
Commercial Broker  
605.939.4489  
[chris@rapidcitycommercial.com](mailto:chris@rapidcitycommercial.com)

**Tom Rau**  
Broker Associate, Re/Max Results  
605.390.2735  
[trau222057@aol.com](mailto:trau222057@aol.com)

**RE/MAX**  
RESULTS

Disclaimer: The information contained herein has been given to us by the owner of the property or other sources we deem reliable. We have no reason to doubt its accuracy, but we do not guarantee it. All information should be verified prior to purchase or lease.



## PROPERTY SUMMARY

### PROPERTY OVERVIEW

- ▶ Multi-level office building that is divided into 5 individual suites
- ▶ 4 of 5 suites currently leased ([Leases and Financial Summary](#))
- ▶ Main level (6,044sf) holds 3 occupied suites, and tenants share a common area at the main entrance.
- ▶ Garden level (4,479sf) holds 2 suites, where one of the suites is occupied. Garden level tenants share a small waiting area and staircase. 2,634sf vacant suite currently available for lease.
- ▶ Large parking lot with 30+ parking spots and designated handicap parking
- ▶ Great opportunity for an investor/owner occupant looking to occupy the vacant suite!
- ▶ HOA fees include: Landscaping, Exterior Building Maintenance, Snow Removal, and Insurance
- ▶ The owner may be open to seller financing for qualified buyers

### PROPERTY DETAILS

Building Size:	11,843 SF
Lot Size:	0.8 AC
Year Built:	1985
Tax ID:	56593
Taxes (2024):	\$18,817.30
Zoning:	Office Commercial
Water/Sewer:	City
Electric:	BHP
Gas Provider:	MDU
<b>Sale Price:</b>	<b>\$1,495,000</b>





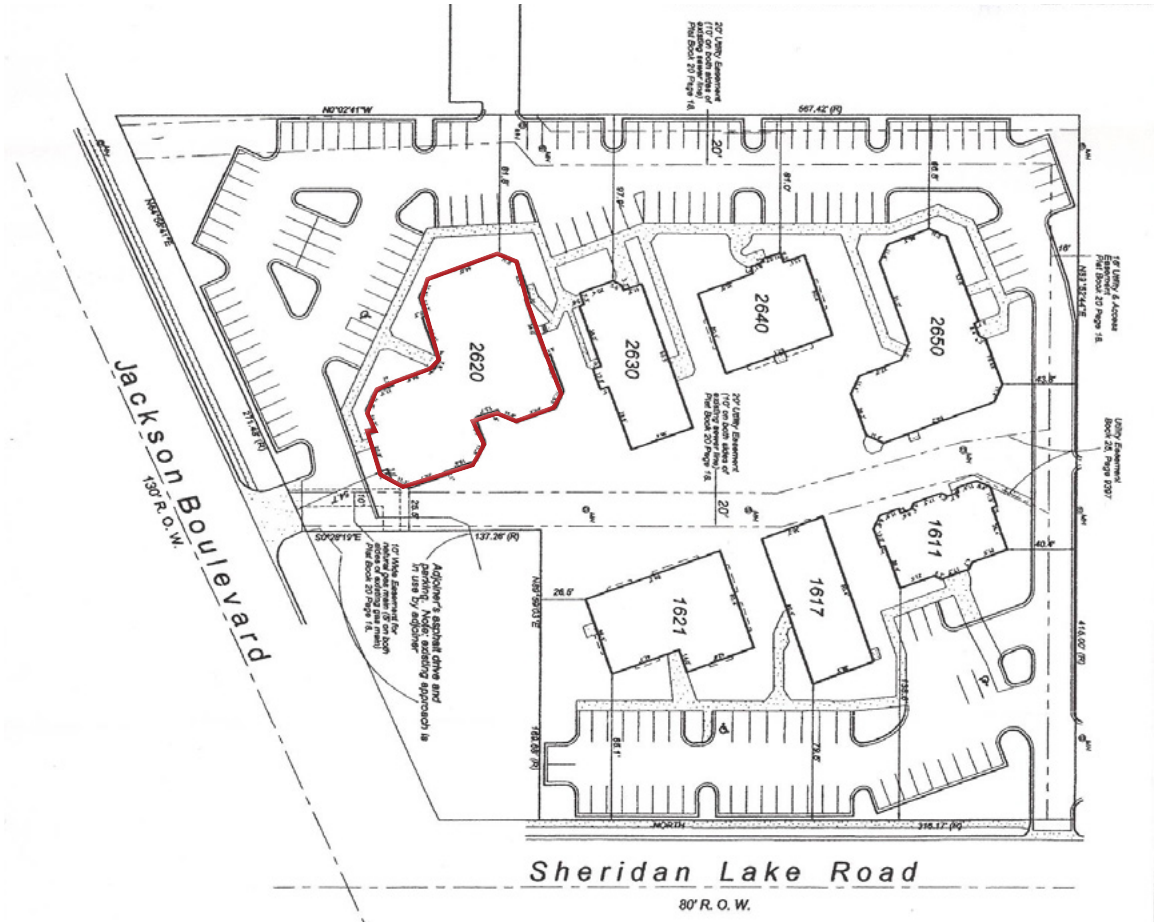
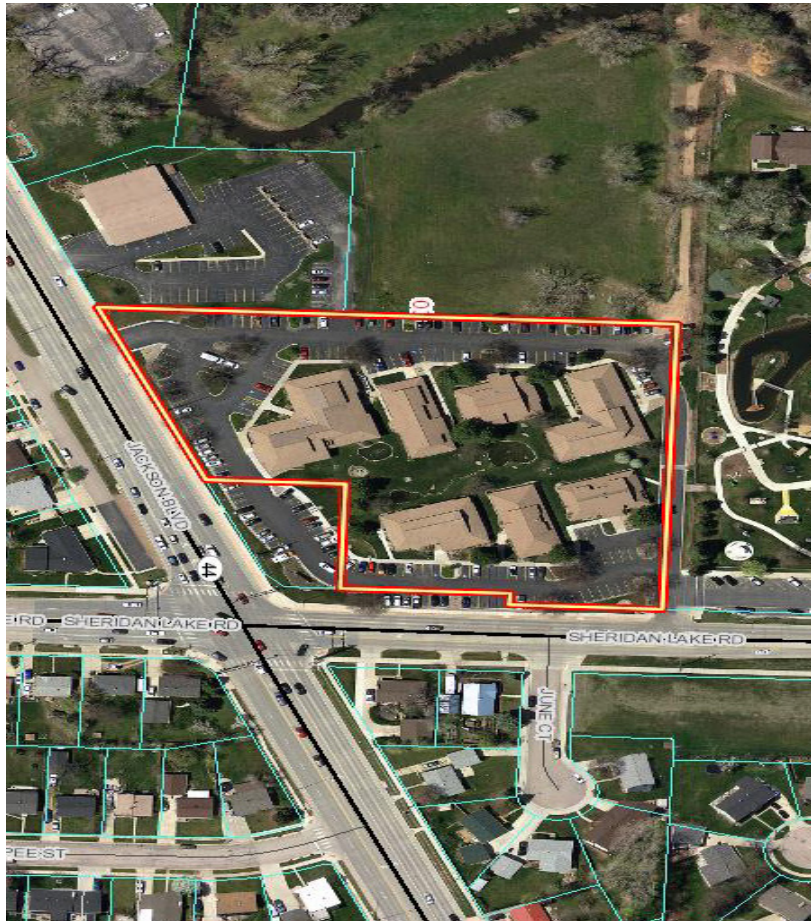


2620 JACKSON BLVD, UNIT B  
RAPID CITY, SD 57702

## BUILDING PHOTOS







## MAIN LEVEL SUITES

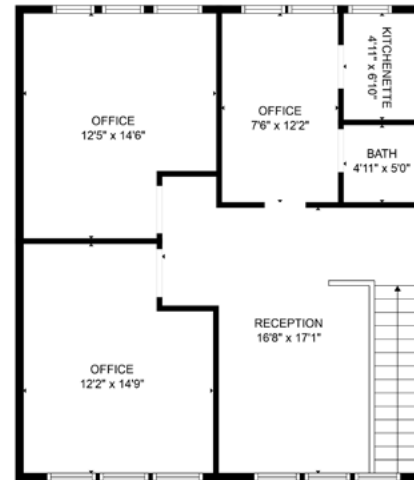
### SUITE B

Tenant:	Dentist Office
Suite Size:	2,995 SF
Lease Term:	Expires 2029



### SUITE C2

Tenant:	Engineering
Suite Size:	808 SF
Lease Term:	Expires 2025

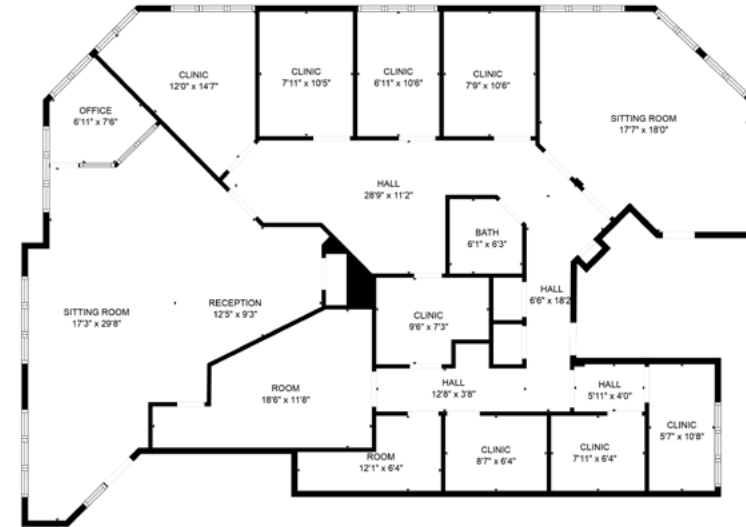


FLOOR 2

FLOOR 1

### SUITE C

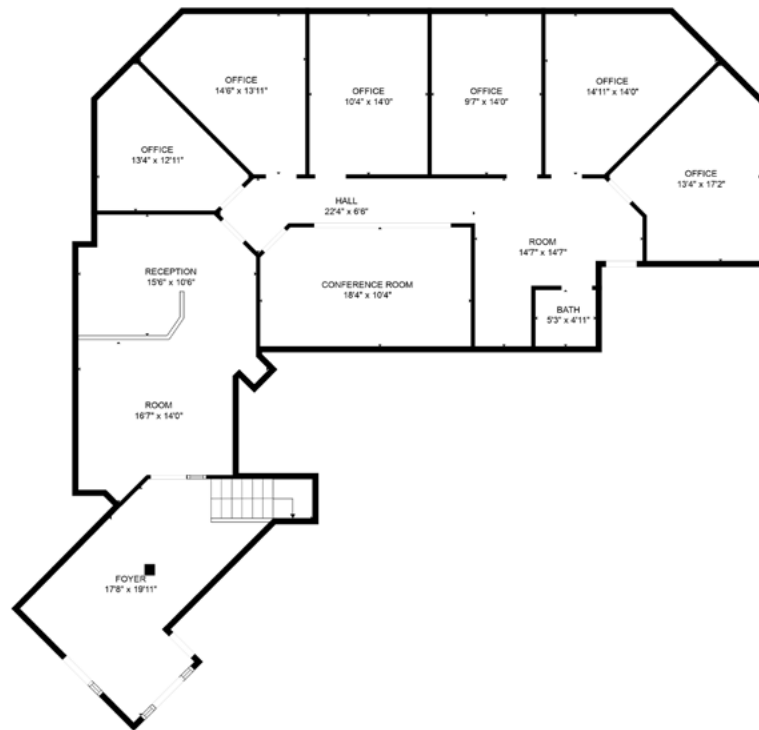
Tenant:	Acupuncture
Suite Size:	2,214 SF
Lease Term:	Expires 2027



**GARDEN LEVEL SUITES**

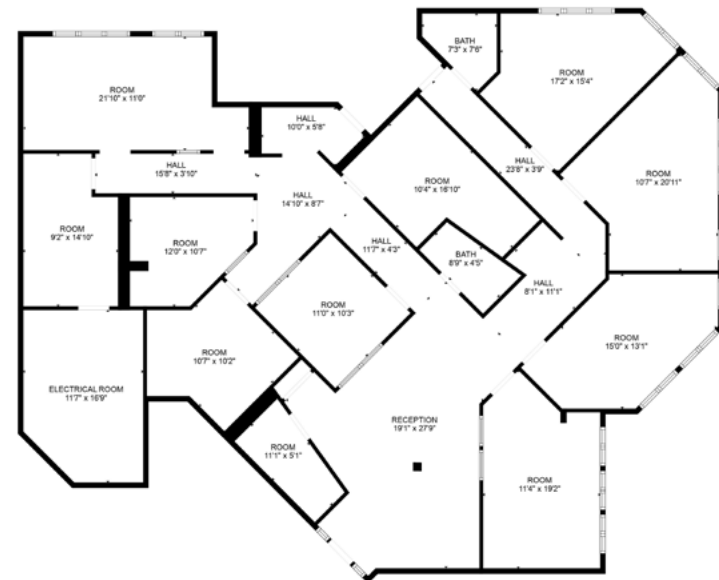
**SUITE E**

Tenant:	Nonprofit
Suite Size:	1,845 SF
Lease Term:	Expires 2026



**SUITE F**

Tenant:	<i>Vacant</i>
Suite Size:	2,634 SF
Lease Term:	<i>Vacant</i>



## STATISTICS

### WELCOME TO SOUTH DAKOTA AND THE BLACK HILLS!

The Mount Rushmore State of South Dakota has carved a solid reputation for business friendliness. It is consistently ranked in the top five states for setting up and conducting business. Small and big companies alike are discovering South Dakota's central location and progressive business climate.

The Black Hills boasts the country's most recognized national monument - Mt. Rushmore - bringing millions of tourists from all over the world to Western South Dakota every year. For the past 9 years, South Dakota tourism has posted an increase in visitation, visitor spending and overall impact on the state's economy with 14.4 million visitors to South Dakota, \$4.7 billion in visitor spending, and 56,826 jobs sustained by the tourist industry.

#### BUSINESS FRIENDLY TAXES

- NO** corporate income tax
- NO** franchise or capital stock tax
- NO** personal property or inventory tax
- NO** personal income tax
- NO** estate and inheritance tax



#### REGIONAL STATISTICS

Rapid City PUMA Population	189,754
Rapid City Population Growth	1.46% YoY
Rapid City Unemployment Rate	2.3%
PUMA Median Income	\$57,977

#### SD TOURISM 2021 STATISTICS

Room nights	↑	33%
Park Visits	↑	11%
Total Visitation	↑	28%
Visitor Spending	↑	28%

### RAPID CITY

- #1** Outdoor Life–Best hunting and fishing town
- #4** WalletHub–Best Places to rent

- #4** CNN Money–Best Place to Launch a Business
- #11** Forbes–Best Small City for Business

- #4** Wall Street Journal–Emerging Housing Markets
- #16** Top 100 Best Places to Live

### SOUTH DAKOTA

- #1** Best State for Starting a Business
- #2** Best Business Climate in the US
- #2** Business Tax Climate by the Tax Foundation

- #1** America's Friendliest State for Small Business
- #2** Best State for Quality of Life
- #3** US News Fiscal Stability 2019 list

- #2** Best State for Small Business Taxes
- #2** Best State for Overall Well-Being and Happiness
- #3** Small Business Policy Index 2018 list





2620 JACKSON BLVD, UNIT B  
RAPID CITY, SD 57702

## DISCLAIMER

All materials and information received or derived from KW Commercial its directors, officers, agents, advisors, affiliates and/or any third party sources are provided without representation or warranty as to completeness, veracity, or accuracy, condition of the property, compliance or lack of compliance with applicable governmental requirements, developability or suitability, financial performance of the property, projected financial performance of the property for any party's intended use or any and all other matters. Neither KW Commercial, its directors, officers, agents, advisors, or affiliates makes any representation or warranty, express or implied, as to accuracy or completeness of any materials or information provided, derived, or received. Materials and information from any source, whether written or verbal, that may be furnished for review are not a substitute for a party's active conduct of its own due diligence to determine these and other matters of significance to such parties. KW Commercial will not investigate or verify any such matters or conduct due diligence for a party unless otherwise agreed in writing.

EACH PARTY SHALL CONDUCT ITS OWN INDEPENDENT INVESTIGATION AND DUE DILIGENCE.

Any party contemplating or under contract or in escrow for a transaction is urged to verify all information and to conduct their own inspections and investigations including through appropriate third-party independent professionals selected by such party. All financial data should be verified by the party including by obtaining and reading applicable documents and reports and consulting appropriate independent professionals. KW Commercial makes no warranties and/or representations regarding the veracity, completeness, or relevance of any financial data or assumptions. KW Commercial does not serve as a financial advisor to any party regarding any proposed transaction.

All data and assumptions regarding financial performance, including that used for financial modeling purposes, may differ from actual data or performance. Any estimates of market rents and/or projected rents that may be provided to a party do not necessarily mean that rents can be established at or increased to that level. Parties must evaluate any applicable contractual and governmental limitations as well as market conditions, vacancy factors and other issues in order to determine rents from or for the property. Legal questions should be discussed by the party with an attorney. Tax questions should be discussed by the party with a certified public accountant or tax attorney. Title questions should be discussed by the party with a title officer or attorney. Questions regarding the condition of the property and whether the property complies with applicable governmental requirements should be discussed by the party with appropriate engineers, architects, contractors, other consultants, and governmental agencies. All properties and services are marketed by KW Commercial in compliance with all applicable fair housing and equal opportunity laws.

### KW RAPID CITY COMMERCIAL

2401 WEST MAIN STREET  
RAPID CITY, SD 57702

### PRESENTED BY:

### Chris Long

*SIOR, CCIM, Commercial Broker*

O: (605) 335-8100

C: (605) 939-4489

[chris@rapidcitycommercial.com](mailto:chris@rapidcitycommercial.com)

Each Office Independently Owned and Operated

The calculations and data presented are deemed to be accurate, but not guaranteed. They are intended for the purpose of illustrative projections and analysis. The information provided is not intended to replace or serve as a substitute for any legal, accounting, investment, real estate, tax or other professional advice, consultation or service. The user of this software should consult with a professional in the respective legal, accounting, tax or other professional areas before making any decisions.